

**TERMINAL TYPES:**

# HONEYWELL  
RIM 7800  
SUBBASE

# COMPRESSION  
MOLEX  
CONNECTOR

# MALE SPADE  
TERMINAL

# FEMALE SPADE  
TERMINAL

# RJ11 OR RJ45  
CONNECTOR

RELAY / SWITCH  
TERMINALS:

C = COMMON  
NC = NORM. CLOSED  
NO = NORM. OPEN

REV: 8	EN: 34-1922	DATE: 07/27/2023	DWN:	ZK	CHKD:	SPS	APPD:	APPD:
ADDEC COLORS TO WIRES, ADDED NOTE FOR CLARIFICATION.								

REFERENCE ASME Y14.5M-1994 FOR GEOMETRIC TOLERANCES. ALL DIMENSIONS IN INCHES. DRAWING NOT TO BE SCALED. NON-BASIC DIMENSIONAL AND ANGULAR TOLERANCES UNLESS OTHERWISE NOTED:  
DECIMALS: X.X - ±0.1, X.XX - ±0.03, X.XXX - ±0.005. FRACTIONAL: ±1/32. ANGULAR: ±1°

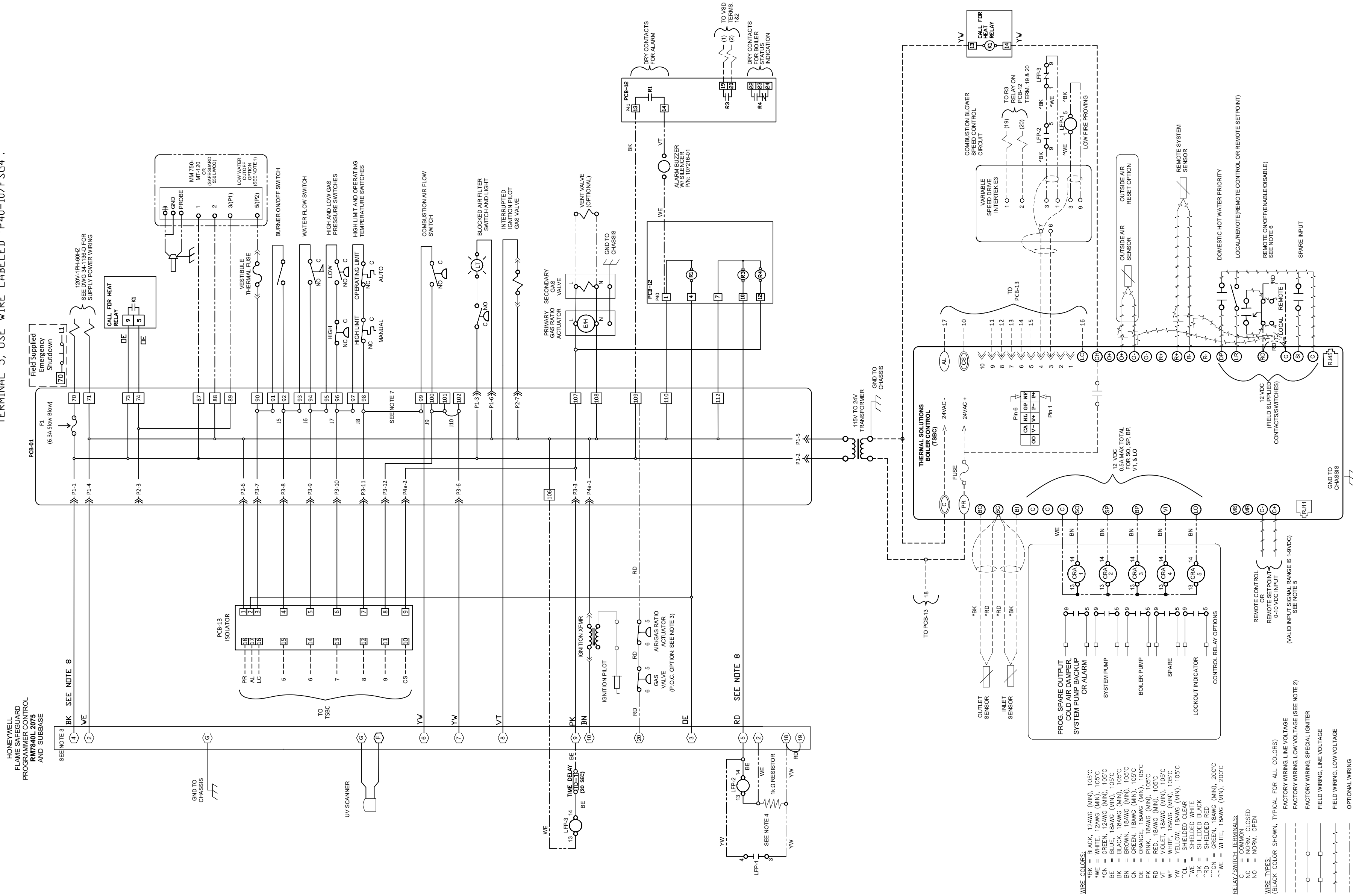
THIS DOCUMENT CONTAINS CONFIDENTIAL INFORMATION WHICH IS THE PROPERTY OF THERMAL SOLUTIONS LLC. THIS DOCUMENT MAY NOT BE REPRODUCED, TRANSFERRED OR USED, OR ITS CONTENTS DISCLOSED, WITHOUT THE WRITTEN PERMISSION OF THE OWNER.

SUPERCEDES: 34-1227-C, 34-1229-C		TITLE LADDER WIRING DIAGRAM CONTROL CIRCUIT W/ P.O.C. & L.F.P. WITH ALARM BUZZER OPTION; EVS-500/3000	
PROPERTY OF <b>Thermal Solutions Products LLC</b> LANCASTER, PA 17604-3244		DRAWING NUMBER 34-1324-C	SCALE NONE
		DWG SIZE C	SHEET 1 OF 1

- NOTES:**
- IF LOW WATER CUTOFF (LWCO) IS SHIPPED LOOSE DISCONNECT WIRE, LABELLED P10-89/LWCO 3, FROM VESTIBULE THERMAL FUSE AND CONNECT TO LWCO TERMINAL 3 AND CONNECT LWCO TERMINAL 5 TO VESTIBULE THERMAL FUSE.
  - FACTORY WIRING, LOW VOLTAGE IS 24VAC UNLESS OTHERWISE INDICATED.
  - IF THE P.O.C. OPTION IS NOT USED, JUMPER TERMINAL 4 TO TERMINAL 20 ON THE FLAME SAFEGUARD SUBBASE.
  - IF THE LFP OPTION IS NOT USED, JUMPER TERMINAL 5 TO TERMINAL 18 ON THE FLAME SAFEGUARD SUBBASE.

- THE VALID INPUT SIGNAL RANGE FOR TERMINALS (C+C-) IS 1-9VDC. A SIGNAL ABOVE OR BELOW THIS RANGE IS RECOGNIZED AS A 'SOFT' ALARM. AS A RESULT, THE CONTROL FUNCTION IS IGNORED.

- IF THE REMOTE ON/OFF(ENABLE/DISABLE) SWITCH IS NOT ORDERED, JUMPER TERMINAL RD TO TERMINAL C ON THE TSBC. WHEN IT IS ORDERED, THE SWITCH IS FACTORY SUPPLIED & THE CONTACTS ARE FIELD SUPPLIED.
- CUT JUMPERS 5, 6, 7, 8, AND 9.
- ON FSG TERMINAL 4, USE WIRE LABELLED 'PI-7/FSG5'. ON FSG TERMINAL 5, USE WIRE LABELLED 'P40-10/FSG4'.



- WIRE COLORS:**
- \*BK = BLACK, 12AWG (MIN.), 105°C
  - \*GN = GREEN, 12AWG (MIN.), 105°C
  - \*BE = BLUE, 18AWG (MIN.), 105°C
  - \*BK = BLACK, 18AWG (MIN.), 105°C
  - \*BN = BROWN, 18AWG (MIN.), 105°C
  - \*OR = ORANGE, 18AWG (MIN.), 105°C
  - \*PK = PINK, 18AWG (MIN.), 105°C
  - \*RD = RED, 18AWG (MIN.), 105°C
  - \*VT = VIOLET, 18AWG (MIN.), 105°C
  - \*WE = WHITE, 18AWG (MIN.), 105°C
  - \*CL = SHIELDED CLEAR
  - \*BK = SHIELDED BLACK
  - \*RD = SHIELDED RED
  - \*WE = SHIELDED WHITE
  - \*RD = SHIELDED RED (P.O.C. ONLY), 200°C
  - \*WE = SHIELDED WHITE (P.O.C. ONLY), 200°C
- RELAY / SWITCH TERMINALS:**
- NC = NORM. CLOSED
  - NO = NORM. OPEN
- WIRE TYPES:**
- (BLACK) COLOR SHOWN, TYPICAL FOR ALL COLORS
  - FACTORY WIRING LOW VOLTAGE (SEE NOTE 2)
  - FACTORY WIRING SPECIAL IGNITER
  - FIELD WIRING, LINE VOLTAGE
  - FIELD WIRING, LOW VOLTAGE
  - OPTIONAL WIRING