

TERMINAL TYPES:

Ⓝ HONEYWELL
RM 7800
SUBBASE

Ⓢ COMPRESSION

Ⓜ MOLEX
CONNECTOR

Ⓜ MALE SPADE
TERMINAL

Ⓜ FEMALE SPADE
TERMINAL

Ⓜ RJ11 OR RJ45
CONNECTOR

RELAY / SWITCH
TERMINALS:

C = COMMON

NC = NORM. CLOSED

NO = NORM. OPEN

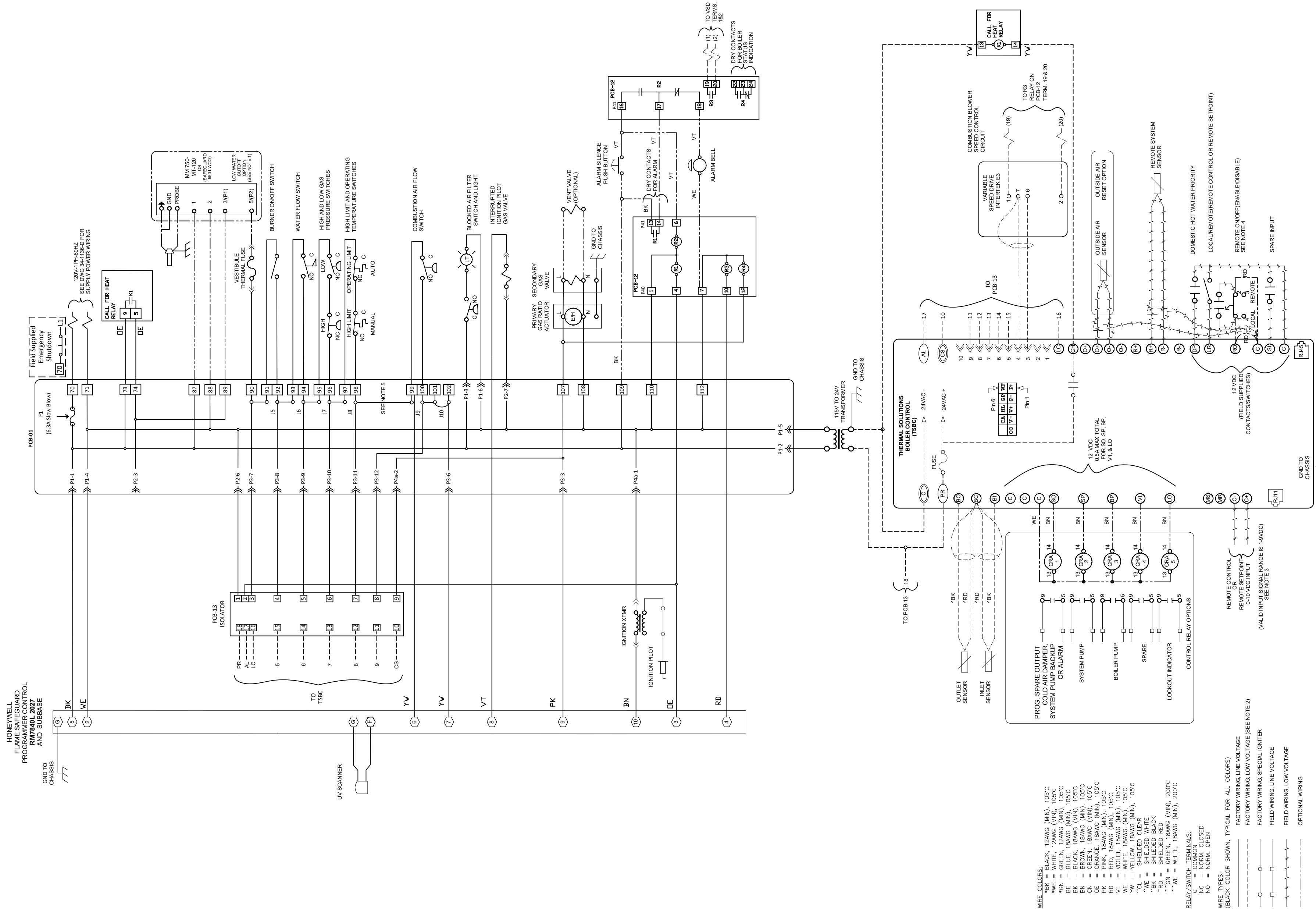
REV: 8	EN: 34-1881	DATE: 03/30/2023	DWN:	AL	CHKD:	SPS	APPD:	APPD:
ADDED COLORS TO WIRES, ADDED NOTE FOR CLARIFICATION								

REFERENCE ASME Y14.5M-1994 FOR GEOMETRIC TOLERANCES. ALL DIMENSIONS IN INCHES. DRAWING NOT TO BE SCALED. NON-BASIC DIMENSIONAL AND ANGULAR TOLERANCES UNLESS OTHERWISE NOTED:
DECIMALS: X.X - ±0.1, X.XX - ±0.03, X.XXX - ±0.005. FRACTIONAL: ±1/32. ANGULAR: ±1°

THIS DOCUMENT CONTAINS CONFIDENTIAL INFORMATION WHICH IS THE PROPERTY OF THERMAL SOLUTIONS LLC. THIS DOCUMENT MAY NOT BE REPRODUCED, TRANSFERRED OR USED, OR ITS CONTENTS DISCLOSED, WITHOUT THE WRITTEN PERMISSION OF THE OWNER.

SUPERCEDES: 34-1135-C, 34-1180-C		TITLE LADDER WIRING DIAGRAM CONTROL CIRCUIT W/ RM7896D 2027 PROGRAMMER CONTROL; EVS-500/3000	
PROPERTY OF Thermal Solutions Products LLC LANCASTER, PA 17604-3244		DRAWING NUMBER 34-1316-C	SCALE NONE
		DWG SIZE C	SHEET 1 OF 1

- NOTES:
- IF LOW WATER CUTOFF (LWCO) IS SHIPPED LOOSE DISCONNECT WIRE, LABELLED P10-89/LWCO 3, FROM VESTIBULE THERMAL FUSE AND CONNECT TO LWCO TERMINAL 3 AND CONNECT LWCO TERMINAL 5 TO VESTIBULE THERMAL FUSE.
 - FACTORY WIRING, LOW VOLTAGE IS 24VAC UNLESS OTHERWISE INDICATED.
 - THE VALID INPUT SIGNAL RANGE FOR TERMINALS (C+C-) IS 1-9VDC. A SIGNAL ABOVE OR BELOW THIS RANGE IS RECOGNIZED AS A 'SOFT' ALARM. AS A RESULT, THE CONTROL FUNCTION IS IGNORED.
 - IF THE REMOTE ON/OFF(ENABLE/DISABLE) SWITCH IS NOT ORDERED, JUMPER TERMINAL RD TO TERMINAL C ON THE TSBC. WHEN IT IS ORDERED, THE SWITCH IS FACTORY SUPPLIED & THE CONTACTS ARE FIELD SUPPLIED.
 - CUT JUMPERS 5, 6, 7, 8, AND 9.



WIRE COLORS:
 *BK = BLACK, 12AWG (MIN), 105°C
 *W = WHITE, 12AWG (MIN), 105°C
 *GN = GREEN, 12AWG (MIN), 105°C
 *BE = BLUE, 18AWG (MIN), 105°C
 *BL = BLACK, 18AWG (MIN), 105°C
 *GN = GREEN, 18AWG (MIN), 105°C
 *OR = ORANGE, 18AWG (MIN), 105°C
 *PK = PINK, 18AWG (MIN), 105°C
 *RD = RED, 18AWG (MIN), 105°C
 *W = WHITE, 18AWG (MIN), 105°C
 *YE = YELLOW, 18AWG (MIN), 105°C
 *CL = SHIELDED CLEAR
 *WE = SHIELDED WHITE
 *BK = SHIELDED BLACK
 *GN = SHIELDED GREEN
 *W = WHITE, 18AWG (MIN), 200°C
 *WE = WHITE, 18AWG (MIN), 200°C

RELAY/SWITCH TERMINALS:
 *C = COMMON
 *NC = NORM. CLOSED
 *NO = NORM. OPEN

WIRE TYPES:
 --- FACTORY WIRING, LINE VOLTAGE (BLACK COLOR SHOWN, TYPICAL FOR ALL COLORS)
 --- FACTORY WIRING, LOW VOLTAGE (SEE NOTE 2)
 --- FIELD WIRING, SPECIAL INTERIOR
 --- FIELD WIRING, LINE VOLTAGE
 --- FIELD WIRING, LOW VOLTAGE
 --- OPTIONAL WIRING